

Arteplano Premium

DE Montageanleitung

GB Assembly Instructions

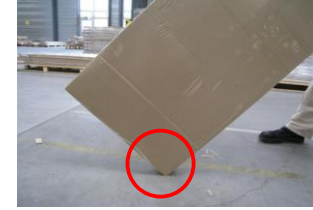
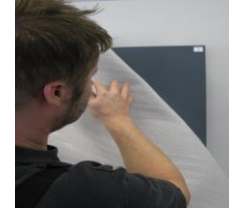
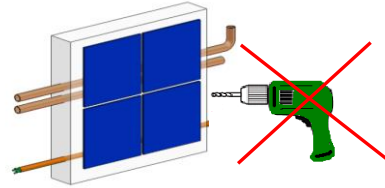
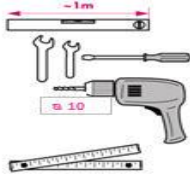
FR Instructions de montage

IT Istruzione di montaggio

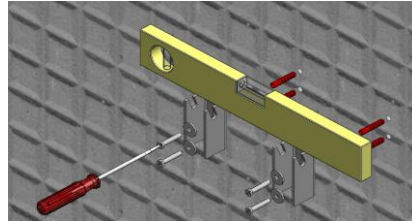
ES Instrucciones de montaje



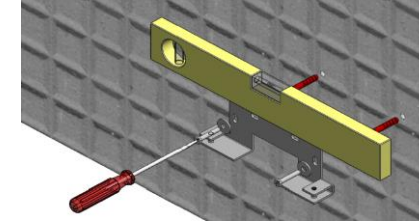
Original mounting instruction 04/2015 PGR165 Production Gränichen



1



2



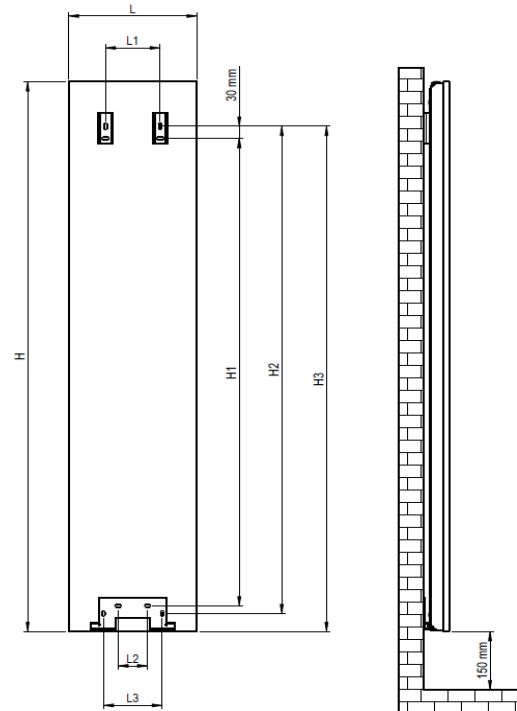
1



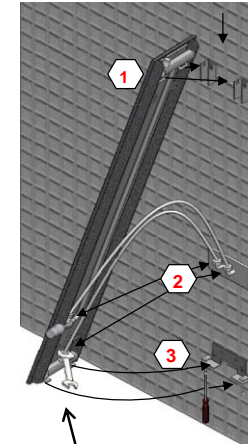
2



3



3



L [mm]				H [mm]			
(L)	(L1)	(L2)	(L3)	(H)	(H1)	(H2)	(H3)
305	130	70	140	1413	1202	1253	1298
453	278	70	140	1413	1202	1253	1298
601	426	70	140	1413	1202	1253	1298
305	130	70	140	1613	1402	1453	1498
453	278	70	140	1613	1402	1453	1498
601	426	70	140	1613	1402	1453	1498
305	130	70	140	1813	1602	1653	1698
453	278	70	140	1813	1602	1653	1698
601	426	70	140	1813	1602	1653	1698